

with Live Music & Video

# CHILDREN'S TEA CEREMONY

6.26.2016 1:30pm  
The Farm SoHo

**Family Pack** (1 Child + 1 Adult): \$22  
**Kids & Teens** (Under 18): \$12  
**Adults** (Over 18): \$14

For Tickets and Information:

[www.Ten-Thousand-Leaves.com](http://www.Ten-Thousand-Leaves.com)



\*Japanese matcha tea and sweets  
will be served to all children.

Tea Ceremony Performer  
**SATOKO SUGIMOTO**

Moderator  
**NOZOMI TERAO**

Stage Design  
**CLOUDS AO**

Music  
**BECCA STEVENS**  
**AYA NISHINA**

Video  
**SHIMPEI TAKEDA**

**The Farm SoHo**

447 Broadway 2nd Floor, NYC  
917-722-5027 (\*EXT 1)



Photo in courtesy of Kanna Sasa

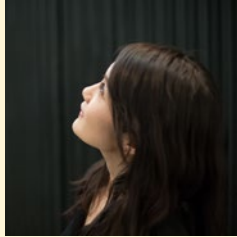
# TEAM



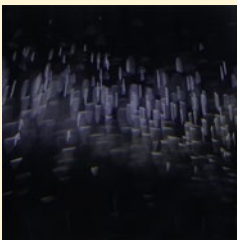
Satoko Sugimoto



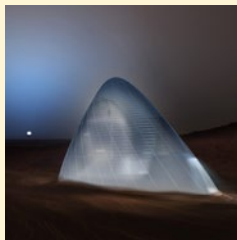
Becca Stevens



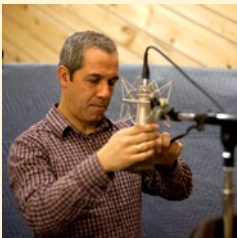
Aya Nishina



Shimpei Takeda



Clouds AO



Fernando Aponte



Nozomi Terao

# Welcome to Children's Tea Ceremony!

Welcome to Children's Tea Ceremony! Here we invite you to join us for a one-of-a-kind Sunday afternoon of Japanese tea ceremony and live music by American vocalist/composer/multi-instrumentalist Becca Stevens (Universal Music Classics), Japanese composer Aya Nishina (Tzadik Records), joined by live video projection by Japanese photographer/video artist Shimpei Takeda, at The Farm SoHo on June 26th, 2016.

Tea ceremony will be performed by Satoko Sugimoto (NY Zui-en-kai), and the program will be led by Nozomi Terao (MSTERIO.org). Original set design by Clouds Architecture Office. Sound engineering by Fernando Aponte. All children and teens (age 3-18) will be served matcha green tea, and Japanese sweets.

## We hope you join us for this special occasion!

\*We would like to ask for your kind permission in advance that some of our concerts and events will be photographed and videotaped, and the contents may be shared publicly.

\*Matcha green tea and traditional sweets will be served in support by the generous donations from 9.11 Circle Wind Concert and Wasara.

Please visit our website for more information: [www.Ten-Thousand-Leaves.com](http://www.Ten-Thousand-Leaves.com)

Ten Thousand Leaves is made possible in part by a major support from The Japan Foundation through the Performing Arts JAPAN program, with additional support from the New York State Council on the Arts, New York City Department of Cultural Affairs, The Howard Gilman Foundation, 9.11 Circle Wind Concert, Car of Tomorrow, Clouds Architecture Office, SHI:KA, MSTERIO.org, The Farm SoHo, Wasara, Yamaha Corporation of America, Soniqs, The Jazz Gallery, and it is endorsed by Consulate General of Japan in New York. Ten Thousand Leaves would like express their special gratitude to Ms. Rio Sakairi, Ms. Kanako Shirasaki, Ms. Miki Hotta, Ms. Nozomi Terao, Ms. Satoko Sugimoto, Mr. Masaki Shirota, Ms. Chris Davis, Mrs. Andrea Davis, Mr. Ostap Rudakevych, Mr. Masayuki Sono, Ms. Kaori Barnes, Mr. Hiroaki Ezawa, Mr. Atsushi Okuyama, Ms. Yukiko Takahashi, Ms. Eri Kurobe, Ms. Kanna Sasa, Ms. Masako Kono, Ms. Taeco Ishida, Fellowship for Japan, and Mr. Paul Jackson, for their support and generous contributions.

## CONTACT

The Jazz Gallery is the official fiscal sponsor of Ten Thousand Leaves.

### The Jazz Gallery

1160 Broadway, 5th Fl New York, NY 10001  
646-494-3625

General Information: [info@jazzgallery.org](mailto:info@jazzgallery.org)

### Press Inquiries:

[nerissa.campbell@jazzgallery.org](mailto:nerissa.campbell@jazzgallery.org)

### Booking and Other Inquiries:

Ten Thousand Leaves  
[contact@ten-thousand-leaves.com](mailto:contact@ten-thousand-leaves.com)

