

TEN THOUSAND LEAVES

Music

BECCA STEVENS
AYA NISHINA

Video Projection

SHIMPEI TAKEDA

Sound Engineering

FERNANDO APONTE

Stage Design

CLOUDS ARCHITECTURE OFFICE

Tea Ceremony Performer (06.26)

SATOKO SUGIMOTO

Moderator (06.26)

NOZOMI TERAO

Background Image in courtesy of Paul Jackson

**We would like to ask for your kind permission in advance that some of our concerts and events will be photographed and videotaped, and the contents may be shared publicly.*

06.24-25.2016

TEN THOUSAND LEAVES Live at The Jazz Gallery

Two shows each night (7:30pm & 9:30pm)
Ticket: \$22 (TJG Member: \$12)



The Jazz Gallery

1160 Broadway, 5th Floor, NYC
646-494-3625

06.26.2016

CHILDREN'S TEA CEREMONY With Live Music & Video

1:30pm

Family Package (One Child + One Adult): \$22
Kids & Teens (Under 18): \$12 / Adults (Over 18): \$14



The Farm SoHo

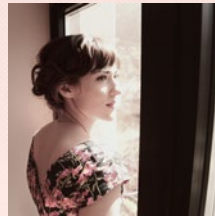
447 Broadway 2nd Floor, NYC
917-722-5027 (*EXT 1)

*Japanese matcha tea and traditional sweets will be served to all children.

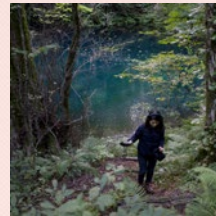
Ten Thousand Leaves is made possible in part by a major support from The Japan Foundation through the Performing Arts JAPAN program, with additional support from the New York State Council on the Arts, New York City Department of Cultural Affairs, The Howard Gilman Foundation, 9.11 Circle Wind Concert, Car of Tomorrow, Clouds Architecture Office, SHI:KA, MSTERIO.org, The Farm SoHo, Wasara, Yamaha Corporation of America, Soniqs, The Jazz Gallery, and it is endorsed by Consulate General of Japan in New York. Ten Thousand Leaves would like express their special gratitude to Ms. Rio Sakairi, Ms. Kanako Shirasaki, Ms. Miki Hotta, Ms. Nozomi Terao, Ms. Satoko Sugimoto, Mr. Masaki Shirota, Ms. Chris Davis, Mrs. Andrea Davis, Mr. Ostap Rudakevych, Mr. Masayuki Sono, Ms. Kaori Barnes, Mr. Hiroaki Ezawa, Mr. Atsushi Okuyama, Ms. Yukiko Takahashi, Ms. Eri Kurobe, Ms. Kanna Sasa, Ms. Masako Kono, Ms. Taeco Ishida, Fellowship for Japan, and Mr. Paul Jackson, for their warmest support and generous contributions.



Inspired by Japanese culture that came to light during its classical period (ca. 550-1185) such as women's literature, and imperial court music — TEN THOUSAND LEAVES renders a cross-cultural bridge connecting people from the past and the present, through songs of timeless human emotions, and reverence for nature.



BECCA STEVENS



AYA NISHINA



SHIMPEI TAKEDA

Recently awarded Performing Arts Japan 2015-2016 by The Japan Foundation, TEN THOUSAND LEAVES is a musical collaboration by American vocalist-composer Becca Stevens (Universal Music Classics), and Japanese composer/producer Aya Nishina (Tzadik Records), with video projection by Japanese photographic artist Shimpei Takeda, delivering a series of live audio-visual performances, recordings, and one-of-a-kind educational outreach programs for local youth.

Inspired by Japanese culture that came to light during the country's classical period (ca. 550-1185) such as women's literature, and imperial court music — TEN THOUSAND LEAVES renders a cross-cultural bridge to connect people from the past and the present, through songs of timeless human emotions, and reverence for nature. A cycle of new compositions written by Stevens and Nishina, transforms ancient Japanese women's poetry from Man-yo-shu ("Collection of Ten Thousand Leaves") and essays such as Makura-no-sōshi ("The Pillow Book") into songs of modern lyricism. Stevens and Nishina together explores a common land between traditional Irish music and Japanese Gagaku; court music from the 7th century.

In June 2016 (06/20-26), the project celebrates its first artist residency in New York City, hosted by The Jazz Gallery as part of the not-for-profit organization's 20th anniversary concert series. On June 24th & 25th, 2016, Stevens and Nishina premieres their commissioned works, and will be joined by Takeda whose live video works will be projected on original stage sets designed by Ostap Rudakevych, and Masayuki Sono, of Clouds Architecture Office. The team also includes internationally acclaimed sound engineer, Fernando Aponte, producing all live sounds and recordings.

The second component of the New York residency, TEN THOUSAND LEAVES brings Children's Tea Ceremony to The Farm SoHo on June 26, 2016 inviting local elementary to high school students (at age 3-18) to a one-of-a-kind international cultural experience. Joined by tea ceremony performer Satoko Sugimoto (NY Zui-en-kai), and moderator Nozomi Terao (MSTERIO.org), the program offers learning opportunities of the venerable preparation of Japanese traditional tea ceremony, tastings of matcha (powdered green tea), and traditional sweets. Live audio-visual performances by the artists will follow a special tea ceremony demonstration by Sugimoto.

For more information, please visit: www.TEN-THOUSAND-LEAVES.com

CONTACT

The Jazz Gallery is the official fiscal sponsor of Ten Thousand Leaves.

The Jazz Gallery

1160 Broadway, 5th Fl New York, NY 10001 | 646-494-3625

General Information: info@jazzgallery.org

Press Inquiries: [Nerissa Campbell / nerissa@jazzgallery.org](mailto:Nerissa_Campbell@jazzgallery.org)

Booking and Other Inquiries:

[Ten Thousand Leaves / contact@ten-thousand-leaves.com](mailto:Ten_Thousand_Leaves/contact@ten-thousand-leaves.com)